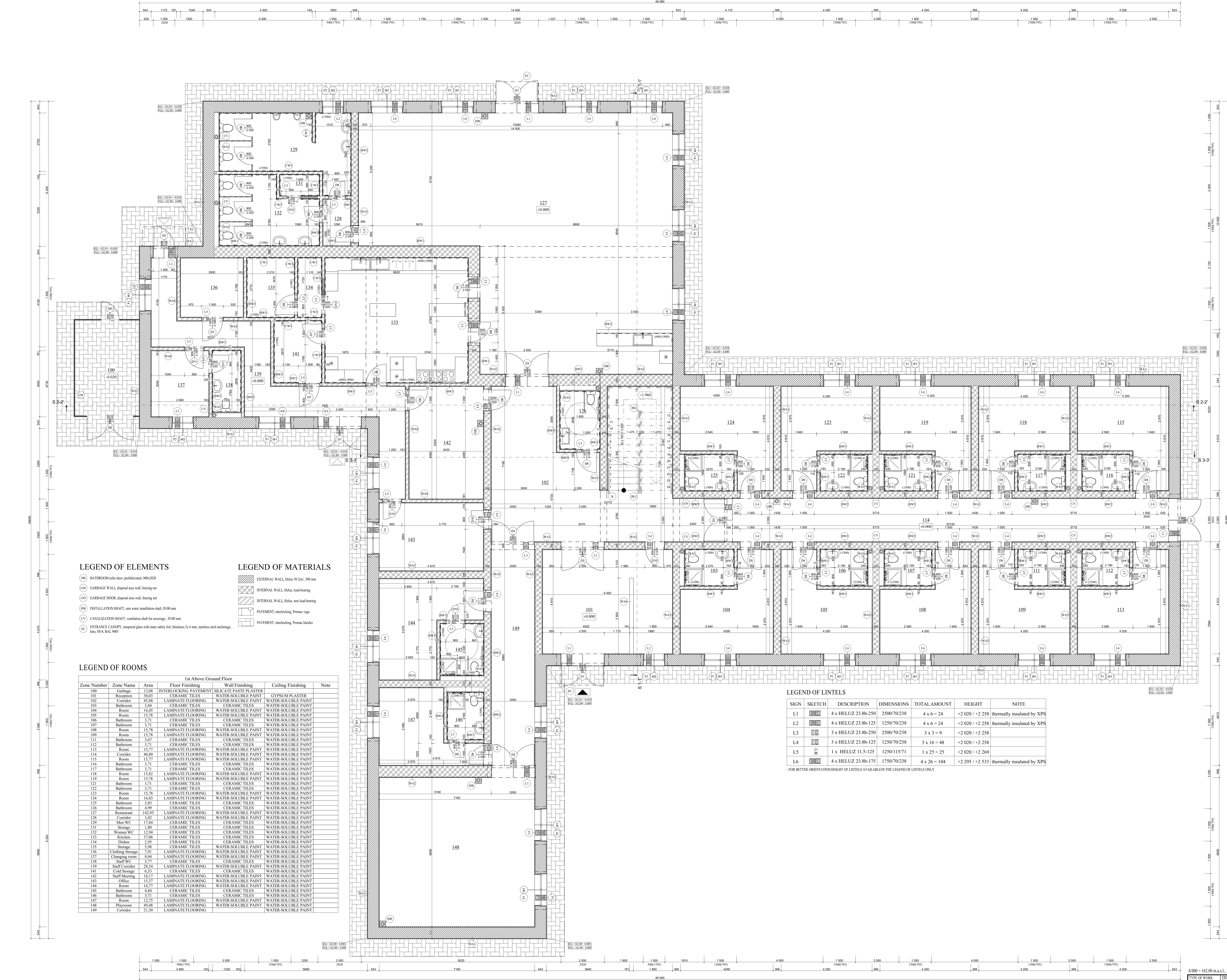


FLOOR PLAN 1st ABOVE GROUND FLOOR

SC 1:50



LEGEND OF ELEMENTS

- (BW) BATHROOM suite door, prefabricated, 90x2020
- (GW) GARBAGE WALL, disposal area wall, fencing net
- (GD) GARBAGE DOOR, disposal area wall, fencing net
- (BS) INSTALLATION SHAFT, rain water installation shaft, D100 mm
- (CS) CANALIZATION SHAFT, ventilation shaft for sewerage, D100 mm
- (EC) ENTRANCE CANOPY, tempered glass with inner safety foil, thickness 24 mm, stainless steel anchorage, bars, M14, RAL 9005

LEGEND OF MATERIALS

- EXTERNAL WALL, hollow brick, 500 mm
- INTERNAL WALL, hollow brick, load-bearing
- INTERNAL WALL, hollow brick, non-load-bearing
- PAVEMENT, interlocking, Poroma vega
- PAVEMENT, interlocking, Poroma klasiko

LEGEND OF ROOMS

1st Above Ground Floor					
Zone Number	Zone Name	Area	Floor Finishing	Wall Finishing	Ceiling Finishing
100	Garbage	11.08	INTERLOCKING PAVEMENT	SILICATE PASTE PLASTER	GYPSUM PLASTER
101	Reception	30.03	CERAMIC TILES	WATER-SOLUBLE PAINT	WATER-SOLUBLE PAINT
102	Corridor	45.48	LAMINATE FLOORING	WATER-SOLUBLE PAINT	WATER-SOLUBLE PAINT
103	Bedroom	3.84	CERAMIC TILES	WATER-SOLUBLE PAINT	WATER-SOLUBLE PAINT
104	Room	16.05	LAMINATE FLOORING	WATER-SOLUBLE PAINT	WATER-SOLUBLE PAINT
105	Room	15.78	LAMINATE FLOORING	WATER-SOLUBLE PAINT	WATER-SOLUBLE PAINT
106	Bathroom	3.71	CERAMIC TILES	WATER-SOLUBLE PAINT	WATER-SOLUBLE PAINT
107	Bathroom	3.71	CERAMIC TILES	WATER-SOLUBLE PAINT	WATER-SOLUBLE PAINT
108	Room	15.78	LAMINATE FLOORING	WATER-SOLUBLE PAINT	WATER-SOLUBLE PAINT
109	Room	15.78	LAMINATE FLOORING	WATER-SOLUBLE PAINT	WATER-SOLUBLE PAINT
110	Bathroom	3.67	CERAMIC TILES	WATER-SOLUBLE PAINT	WATER-SOLUBLE PAINT
111	Bathroom	3.71	CERAMIC TILES	WATER-SOLUBLE PAINT	WATER-SOLUBLE PAINT
112	Room	15.77	LAMINATE FLOORING	WATER-SOLUBLE PAINT	WATER-SOLUBLE PAINT
113	Room	15.77	LAMINATE FLOORING	WATER-SOLUBLE PAINT	WATER-SOLUBLE PAINT
114	Corridor	49.80	LAMINATE FLOORING	WATER-SOLUBLE PAINT	WATER-SOLUBLE PAINT
115	Room	15.77	LAMINATE FLOORING	WATER-SOLUBLE PAINT	WATER-SOLUBLE PAINT
116	Room	15.77	LAMINATE FLOORING	WATER-SOLUBLE PAINT	WATER-SOLUBLE PAINT
117	Bathroom	3.71	CERAMIC TILES	WATER-SOLUBLE PAINT	WATER-SOLUBLE PAINT
118	Room	15.82	LAMINATE FLOORING	WATER-SOLUBLE PAINT	WATER-SOLUBLE PAINT
119	Room	15.78	LAMINATE FLOORING	WATER-SOLUBLE PAINT	WATER-SOLUBLE PAINT
120	Bathroom	3.71	CERAMIC TILES	WATER-SOLUBLE PAINT	WATER-SOLUBLE PAINT
121	Bathroom	3.71	CERAMIC TILES	WATER-SOLUBLE PAINT	WATER-SOLUBLE PAINT
122	Room	15.78	LAMINATE FLOORING	WATER-SOLUBLE PAINT	WATER-SOLUBLE PAINT
123	Room	16.03	LAMINATE FLOORING	WATER-SOLUBLE PAINT	WATER-SOLUBLE PAINT
124	Room	15.85	CERAMIC TILES	WATER-SOLUBLE PAINT	WATER-SOLUBLE PAINT
125	Bathroom	4.99	CERAMIC TILES	WATER-SOLUBLE PAINT	WATER-SOLUBLE PAINT
126	Room	14.95	LAMINATE FLOORING	WATER-SOLUBLE PAINT	WATER-SOLUBLE PAINT
127	Corridor	3.02	LAMINATE FLOORING	WATER-SOLUBLE PAINT	WATER-SOLUBLE PAINT
128	Men WC	17.84	CERAMIC TILES	WATER-SOLUBLE PAINT	WATER-SOLUBLE PAINT
129	Storage	1.80	CERAMIC TILES	WATER-SOLUBLE PAINT	WATER-SOLUBLE PAINT
130	Women WC	12.94	CERAMIC TILES	WATER-SOLUBLE PAINT	WATER-SOLUBLE PAINT
131	Kitchen	27.06	CERAMIC TILES	WATER-SOLUBLE PAINT	WATER-SOLUBLE PAINT
132	Dishes	2.95	CERAMIC TILES	WATER-SOLUBLE PAINT	WATER-SOLUBLE PAINT
133	Storage	5.98	CERAMIC TILES	WATER-SOLUBLE PAINT	WATER-SOLUBLE PAINT
134	Changing room	8.04	LAMINATE FLOORING	WATER-SOLUBLE PAINT	WATER-SOLUBLE PAINT
135	Staff WC	3.77	CERAMIC TILES	WATER-SOLUBLE PAINT	WATER-SOLUBLE PAINT
136	Staff Corridor	28.54	LAMINATE FLOORING	WATER-SOLUBLE PAINT	WATER-SOLUBLE PAINT
137	Cold Storage	6.33	CERAMIC TILES	WATER-SOLUBLE PAINT	WATER-SOLUBLE PAINT
138	Staff Meeting	15.17	LAMINATE FLOORING	WATER-SOLUBLE PAINT	WATER-SOLUBLE PAINT
139	Office	15.17	LAMINATE FLOORING	WATER-SOLUBLE PAINT	WATER-SOLUBLE PAINT
140	Room	16.77	LAMINATE FLOORING	WATER-SOLUBLE PAINT	WATER-SOLUBLE PAINT
141	Bathroom	4.94	CERAMIC TILES	WATER-SOLUBLE PAINT	WATER-SOLUBLE PAINT
142	Bathroom	3.71	CERAMIC TILES	WATER-SOLUBLE PAINT	WATER-SOLUBLE PAINT
143	Room	12.75	LAMINATE FLOORING	WATER-SOLUBLE PAINT	WATER-SOLUBLE PAINT
144	Playroom	49.48	LAMINATE FLOORING	WATER-SOLUBLE PAINT	WATER-SOLUBLE PAINT
145	Corridor	21.30	LAMINATE FLOORING	WATER-SOLUBLE PAINT	WATER-SOLUBLE PAINT

LEGEND OF LINTELS

SIGN	SKETCH	DESCRIPTION	DIMENSIONS	TOTAL AMOUNT	HEIGHT	NOTE
L1		4 x HELUZ 23.8x-250	2500/70/238	4 x 6 = 24	+2 020 / +2 258	thermally insulated by XPS
L2		4 x HELUZ 23.8x-125	1250/70/238	4 x 6 = 24	+2 020 / +2 258	thermally insulated by XPS
L3		3 x HELUZ 23.8x-250	2500/70/238	3 x 3 = 9	+2 020 / +2 258	
L4		3 x HELUZ 23.8x-125	1250/70/238	3 x 3 = 9	+2 020 / +2 258	
L5		1 x HELUZ 11.5x-125	1250/115/71	1 x 25 = 25	+2 020 / +2 269	
L6		4 x HELUZ 23.8x-175	1750/70/238	4 x 26 = 104	+2 295 / +2 533	thermally insulated by XPS

FOR BETTER ORIENTATION HEIGHT OF LINTELS AVAILABLE IN THE LEGEND OF LINTELS ONLY

LEGEND OF ENTRANCES:

- MAIN ENTRANCE
- SIDE ENTRANCE

NOTES:

- ALL ROOMS EQUIPPED WITH DROPPED PLASTERBOARD CEILING, NO FURTHER MARKING IN THE DRAWING TO INCREASE THE CLARITY
- HEIGHT OF CERAMIC TILES OF ACCOMMODATION ROOMS:
 - BATHROOM 150 mm
 - SHOWER CORNER 220 mm
- ALL LINTELS MUST BE PLACED ON LAYER OF MODIFIED SBS BITUMEN FELT, SEE DETAIL A
- COMPOSITIONS OF WALLS AND FLOORS CAN BE SEEN IN THE ANNEX D.1.1.1
- LIST OF WINDOWS CAN BE SEEN IN THE ANNEX D.1.2
- LIST OF EXTERNAL DOORS CAN BE SEEN IN THE ANNEX D.1.2.1
- LIST OF INTERNAL DOORS CAN BE SEEN IN THE ANNEX D.1.2.1 AND D.1.2.14
- LIST OF LOCKSMITH ELEMENTS CAN BE SEEN IN THE ANNEX D.1.2.15
- LIST OF TISSUE ELEMENTS CAN BE SEEN IN THE ANNEX D.1.2.16
- LIST OF ADDITIONAL ELEMENTS CAN BE SEEN IN THE ANNEX D.1.2.17
- DISABLED PEOPLE REQUIREMENTS
- DARKER FREE ENTRANCE PROVIDED WITHOUT NEED OF A RAMP
- ENTRANCE DOOR WIDTH min 1200 mm
- TURNING CIRCLE DIAMETER - 1500 mm
- STAIRCASE RAILING 90 mm FROM THE FLOOR, ANGLE OF 28°
- WINDOW HANDLE IN ROOM 144 max HEIGHT 1100 mm FROM THE FLOOR
- RING REINFORCEMENT DESIGNED ACCORDING TO HELUZ STANDARDS, BARS 4x10 mm
- REAL DIMENSIONS MUST COMPLY WITH STATIC DESIGN CALCULATION

TYPE OF WORK	DIPLOMA THESIS	
DRAWN BY	Ing. Richard Štehlík	
SUPERVISED BY	Ing. Karel Štehlík	
CUSTOMER	John Dvorník, Slovenský 288/5 902 01 Pernek Štehlík	
SITE LOCATION	Slovenský 288/5 902 01 Pernek Štehlík	
PROJECT TITLE	HOTEL	
BUILDING OBJECT	HOTEL	PAPER FORMAT
DATE	01/2019	
DRAWING TITLE	FLOOR PLAN 1 st ABOVE GROUND FLOOR	SCALE
		DRAWING NO.
		D.1.1.01